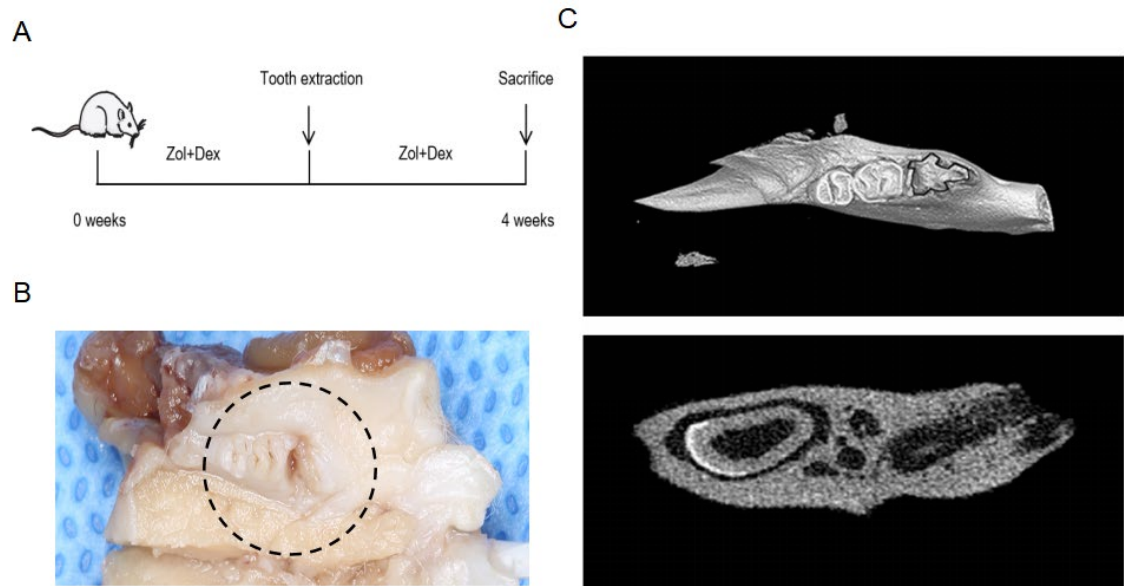


## Supplementary Materials



**Figure S1.** Combination of bisphosphonate and dexamethasone treatment enhanced BRONJ disease in rats. **(A)** Experimental protocol for generating the BRONJ model. The rats received both Zol and Dex administered intravenously for two weeks with tooth extraction. **(B)** The open wound of oral mucosa over the extraction site in BRONJ rats. **(C)** Micro-CT scan of the extraction site in BRONJ rats.